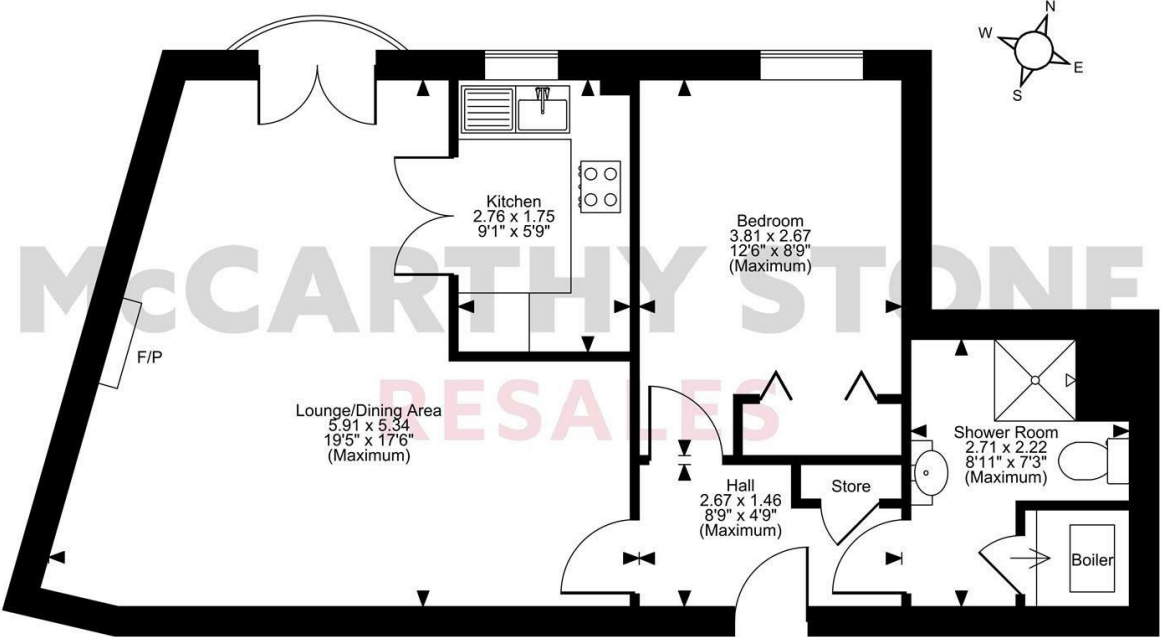


Jessop Court, Chester Road Little Sutton, Ellesmere Port,
Approximate Gross Internal Area
524 Sq Ft/49 Sq M



First Floor

FOR ILLUSTRATIVE PURPOSES ONLY - NOT TO SCALE
The position & size of doors, windows, appliances and other features are approximate only.
© ehouse. Unauthorised reproduction prohibited. Drawing ref. dig/8577258/SKL

Council Tax Band: B



Energy Efficiency Rating		
	Current	Potential
Very energy efficient - lower running costs		
(92 plus) A		
(81-91) B	86	87
(69-80) C		
(55-68) D		
(39-54) E		
(21-38) F		
(1-20) G		
Not energy efficient - higher running costs		
England & Wales	EU Directive 2002/91/EC	

This floor plan is not drawn to scale and is for illustrative purposes only. Any measurements, floor areas (including any total floor area), openings and orientation are approximate and for guidance only. McCarthy Stone Resales do not take liability for any error, omission or misstatement. All parties must rely on their own inspections. It should not be assumed that any furniture or fittings contained in the photographs are included in any sale. All details referring to time and distances to localities are approximate. Details regarding any common charges and other applicable fees are provided by the seller and should not be relied on without verification and further checks made through a solicitor/conveyancer. Please contact the Property Consultant for further information that Appliances (including central heating) have not been tested, therefore it cannot be assumed that they are in good working order. All interested parties are advised to check availability and make an appointment before travelling to view the property to avoid disappointment or wasted time or travel expenses. The details contained within this brochure are for information purposes only and do not form part of any agreement. All purchases will be subject to contract terms. © All artwork (photos and floorplans) and written content are the sole property and copyright of McCarthy & Stone Resales Limited and are legally protected by UK & International copyright laws. Under no circumstance may you download, reproduce, publish or distribute any content for commercial purposes, without prior written permission from McCarthy Stone Resales. Unauthorised duplication or usage for commercial purposes is prohibited by the Copyright law and will be prosecuted.



39 Jessop Court

Chester Road, Ellesmere Port, CH66 3SR



Asking price £128,000 Leasehold

A spacious ONE BEDROOM first floor corner APARTMENT with GARDEN VIEWS situated in this age exclusive MCCARTHY STONE RETIREMENT LIVING DEVELOPMENT for the OVER 60'S in the centre of LITTLE SUTTON village.

Call us on 0345 556 4104 to find out more.

Jessop Court, Chester Road, Little Sutton, Ellesmere Port

Summary

Jessop Court is a McCarthy & Stone Retirement Living development made up of one and two bedroom apartments, specifically designed for the over 60's, situated on Chester Road.

Jessop Court has a dedicated House Manager on site during the day to take care of things and make you feel at home. For your peace of mind the development has camera door entry and 24-hour emergency call systems, should you require assistance.

The Homeowners' lounge provides a great space to socialise with friends and family. If your guests have travelled from afar, they can extend their stay by booking into the development Guest Suite (usually for a fee of £25 per night - subject to availability) which has an en-suite shower room, tea and coffee making facilities and a TV.

It is a condition of purchase that residents must meet the age requirement of 60 years of age or over.

Local Area

Little Sutton itself is a village in a quiet residential suburb of nearby Ellesmere Port. Jessop Court is situated on the main road linking Birkenhead, with the nearby historic city of Chester and as a result is well served by bus and rail services to both these destinations and Ellesmere Port itself. Jessop Court is conveniently placed for a good range of local

shops including a newsagents, post office and convenience store with a greater selection of shops in Ellesmere Port just 2 miles away.

Entrance Hall

Front door with spy hole leads to the entrance hall. From the hallway there is a door to a walk-in storage cupboard/airing cupboard. Illuminated light switches, smoke detector, apartment security door entry system with intercom and emergency pull cord. Doors lead to the lounge, bedroom and bathroom.

Living Room

A spacious lounge, light and airy, with windows facing the quiet and attractive gardens. There is a feature electric fire with surround which acts as an attractive focal point and ample space for a dining table and chairs. There are TV and telephone points, Sky/Sky+ connection point, ceiling lights, fitted carpets and raised electric power sockets. Glazed doors lead onto a separate kitchen.

Kitchen

Fitted kitchen with a range of modern low and eye level units and drawers with a roll top work surface. UPVC double glazed window, white ceramic sink with mono lever tap and drainer. There is an eye level oven, ceramic hob and cooker hood and a built in fridge.

Bedroom

Double bedroom with a fitted mirror fronted sliding wardrobe, ceiling light, TV and phone point.

1 bed | £128,000

Shower Room

Tiled and fitted with suite comprising of overhead shower and shower screen, low level WC, vanity unit with wash basin and mirror above. There is also a shaving point, wall mounted electric fan heater and extractor fan.

Service charge (breakdown)

- Cleaning of communal windows
- Water rates for communal areas and apartments
- Electricity, heating, lighting and power to communal areas
- 24 hour emergency call system
- Upkeep of gardens and grounds
- Repairs and maintenance to the interior and exterior communal areas
- Contingency fund including internal and external redecoration of communal areas
- Buildings insurance

The Service charge does not cover external costs such as your Council Tax, electricity or TV. To find out more about the service charges please please contact your Property Consultant or House Manager.

Service charge: £2,433.91 per annum (for financial year ending Feb. 2026)

Car Parking Permit Scheme-subject to availability

Parking is by allocated space subject to availability. The fee is £250 per annum. Permits are available on a first come, first served basis. Please check with the House Manager on site for availability.

Lease Information

Lease Length: 125 years from Jan 2009
Ground Rent: £763.22 per annum
Ground Rent review: Jan-39

Additional Information & Services

- Superfast Fibre Broadband available
- Mains water and electricity
- Electric room heating
- Mains drainage

